



Dean Moor Solar Farm

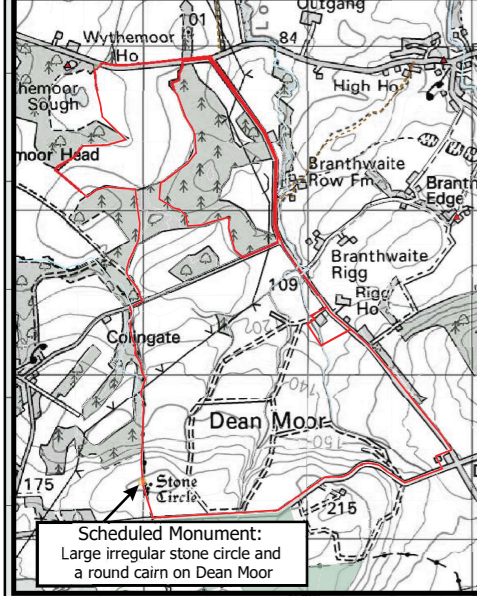
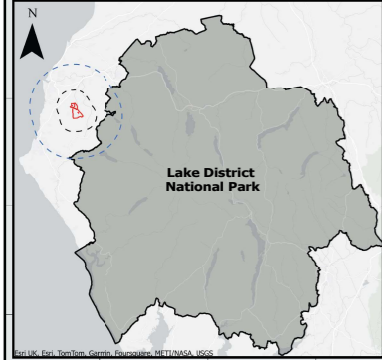
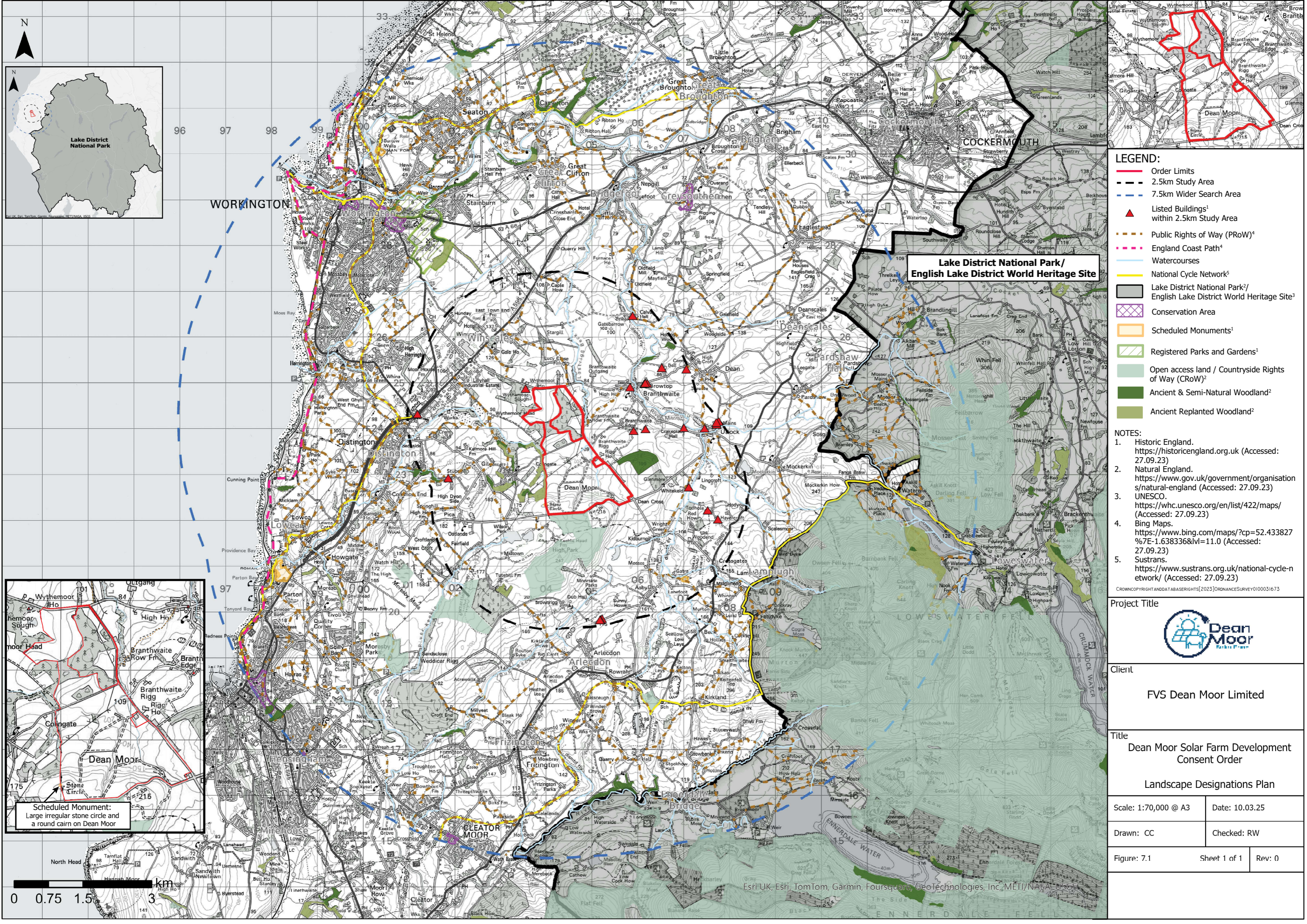
Environmental Statement: Chapter 7 – Figure 7.1 Landscape Designations Plan on behalf of FVS Dean Moor Limited

March 2025
Prepared by: Stantec UK Ltd
PINS Ref: EN010155
Document Ref: 6.2
Revision: 1



Firma Energy

 **ib vogt**



**Lake District National Park/
English Lake District World Heritage Site**

- LEGEND:**
- Order Limits
 - 2.5km Study Area
 - 7.5km Wider Search Area
 - ▲ Listed Buildings¹ within 2.5km Study Area
 - Public Rights of Way (PRoW)⁴
 - England Coast Path⁴
 - Watercourses
 - National Cycle Network⁵
 - Lake District National Park²/
English Lake District World Heritage Site³
 - Conservation Area
 - Scheduled Monuments¹
 - Registered Parks and Gardens¹
 - Open access land / Countryside Rights of Way (CROW)²
 - Ancient & Semi-Natural Woodland²
 - Ancient Replanted Woodland²

- NOTES:**
1. Historic England. <https://historicengland.org.uk> (Accessed: 27.09.23)
 2. Natural England. <https://www.gov.uk/government/organisations/natural-england> (Accessed: 27.09.23)
 3. UNESCO. <https://whc.unesco.org/en/list/422/maps/> (Accessed: 27.09.23)
 4. Bing Maps. <https://www.bing.com/maps/?cp=52.433827%7E-1.638336&lvl=11.0> (Accessed: 27.09.23)
 5. Sustrans. <https://www.sustrans.org.uk/national-cycle-network/> (Accessed: 27.09.23)
- CROWN COPYRIGHT AND DATA RIGHTS (2023) ORDNANCE SURVEY 0100031673

Project Title	
	
Client	
FVS Dean Moor Limited	
Title	
Dean Moor Solar Farm Development Consent Order Landscape Designations Plan	
Scale: 1:70,000 @ A3	Date: 10.03.25
Drawn: CC	Checked: RW
Figure: 7.1	Sheet 1 of 1
	Rev: 0

